



Arizona Early Intervention Program (AzEIP)

is accepting referrals during the COVID-19 crisis

Children **birth through 3 years of age** who meet one of the following criteria, may be considered eligible for early intervention services in Arizona:

- Developmental delay of 50% or greater in one or more areas of development.
- A diagnosed condition with a high probability of resulting in a 50% or greater developmental delay.
- Under special circumstances, children may also be determined eligible based on additional information indicating that there is a potential delay in areas that are difficult to assess with standard measures.

The initial evaluation and assessment for eligibility, and the development of the Individualized Family Service Plan (IFSP) for those eligible, must be completed **within 45 days** of the date that your referral is received.

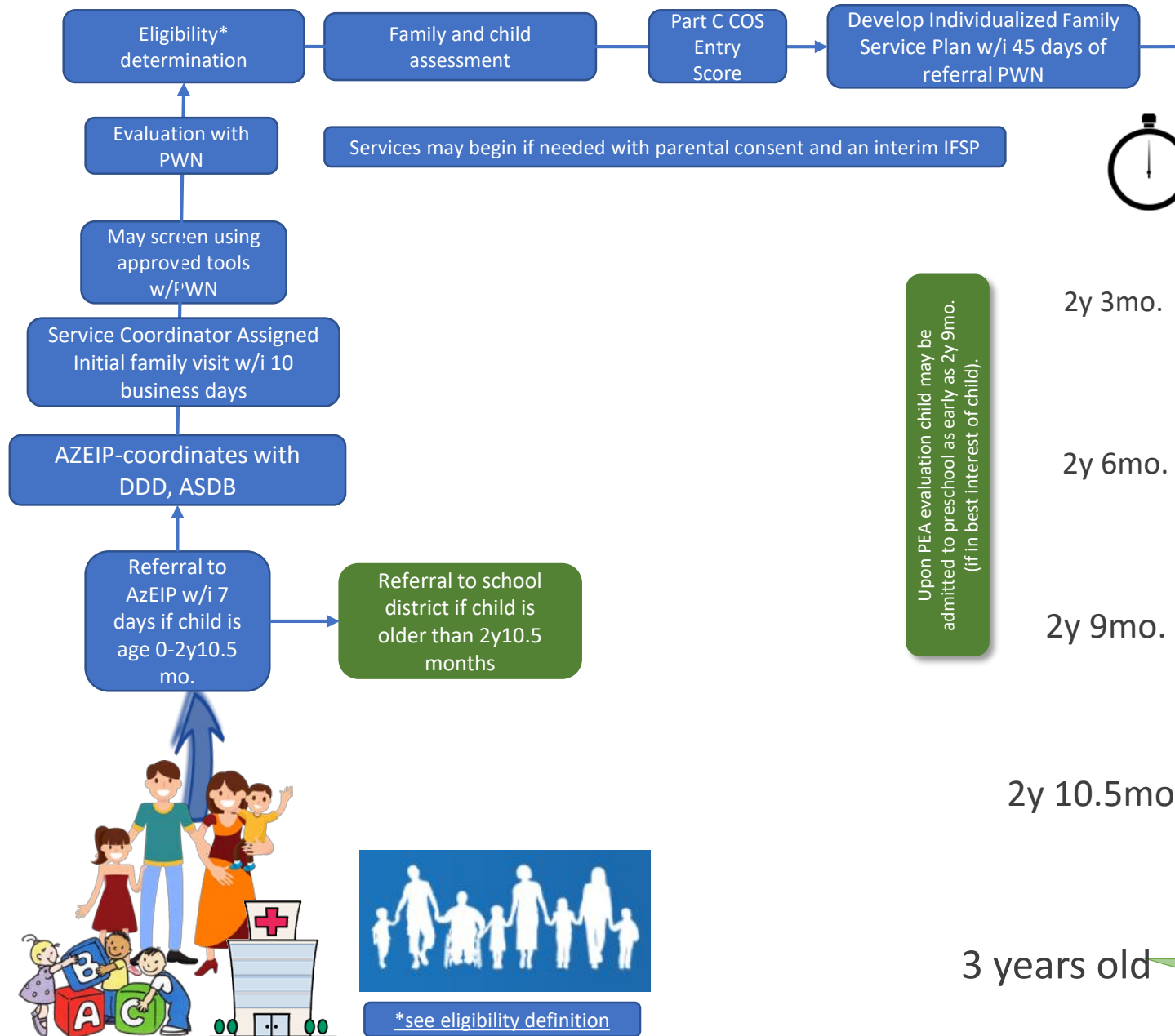
Please note that due to COVID-19, AzEIP services may look different, with alternative service delivery and communication methods used such as tele-intervention, phone/video conferencing, emails, etc. However, referrals are still being processed and responded to and ongoing services are being provided as agreed upon families' IFSP.

Anyone who is concerned about the development of a child who is between 0-3 years of age can make a referral to AzEIP by contacting our central referral agency, Raising Special Kids at:
Toll-Free: 1-888-592-0140 or [Complete an online referral](#)

For more information or to answer your questions, please contact us at:
Phone: 602-532-9960 | Email: allazeip2@azdes.gov

Equal Opportunity Employer / Program • Auxiliary aids and services are available upon request to individuals with disabilities • To request this document in alternative format or for further information about this policy, contact the Division of Developmental Disabilities ADA Coordinator at 602-771-2893; TTY/TDD Services: 7-1-1 Disponible en español en línea o en la oficina local
GCI-1117A FLYENG (04-20)

Stage 1: Initial Planning Process



Stage 2: Services

Provide Early Intervention Services; discuss transition at IFSP that takes place when child is approx. 2 years old

Stage 3: Timely Transition

